

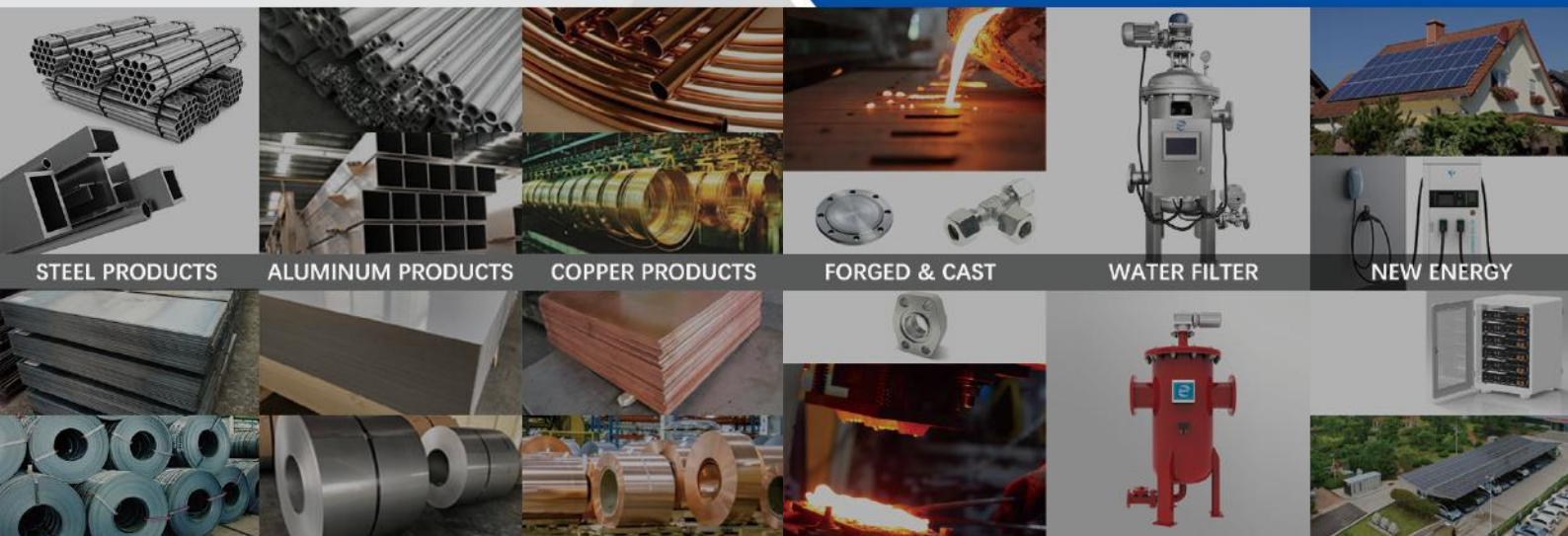


Product Catalogue



ZYT CO., LTD.

www.zytgroups.com



STEEL PRODUCTS

ALUMINUM PRODUCTS

COPPER PRODUCTS

FORGED & CAST

WATER FILTER

NEW ENERGY



Table of Contents

■ THE COMPANY

02 About US

■ PRODUCTS

- 03 STEEL PIPE&TUBE
- 04 STEEL SHEET
- 05 STEEL COIL
- 06 STEEL ROUND BAR
- 07 STEEL PROFILE
- 08 FITTING & FLANGE
- 09 ALUMINUM PRODUCTS
- 10 COPPER PRODUCTS
- 11 FORGED & CAST PRODUCTS
- 12 ELECTRONIC COMPONENTS
- 13 NEW ENERGY
- 14 WATER FILTER

ZYT CO., LTD.

Quality Without Compromise.

Vision

“To be recognized as a global trademark of Quality and Reliability”

Mission

“To be a One-Stop Centre delivering products, solutions and services of the highest quality to our Customers”

ABOUT US

ZYT CO., LTD. is a professional manufacture and supplier of raw material, electronic products and water filters which have been widely used in Power Plants, Petrochemical and energy industries.

As a preeminent provider of a diverse range of Raw Material Products, encompassing Steel, Aluminum, and Copper products in various forms such as coils, sheets, pipes, profiles, fittings and flanges. Furthermore, we offer comprehensive Processing and Cutting services tailored to meet your exact needs, including horizontal and longitudinal cutting, laser and waterjet cutting, welded pipe processing with pipe fittings (tees, elbows), explosive composite plate fabrication, and forging and casting customization.

ZYT headquartered in the vibrant Shijingshan District of Beijing, China, our strategic warehousing facilities are located in Jiangsu, Shandong, and Hebei provinces, ensuring seamless logistics and efficient delivery nationwide and globally. With extensive experience in the domestic and international steel product supply market, we have established a strong reputation for reliability and quality.

Recognizing the burgeoning potential of new energy, ZYT has established a dedicated Department of New Energy, specializing in cutting-edge products within this sector. Our portfolio encompasses ESS & EV Battery, Energy Storage System, Photovoltaic Solar Panels, Solar Hybrid Inverters, Integrated DC Chargers, Community Charging Networks, and a myriad of Electronic Components.

We warmly welcome overseas clients, EPC contractors, end-users, and all stakeholders seeking reliable partners and exploring solutions.



STEEL PIPE & TUBE



- Products Supply: Seamless tube & pipes, welded tube & pipes, square tubes, rectangular tubes, customization products for special size and material
- Application: Widely used in petrochemical, boiler, heat exchanger, electric power, paper making, marine, civil construction, municipal water supply, drainage, fire and agriculture industries, etc.
- Application Standard: ASME, ASTM, EN/DIN, GB, JIS, API 5L, etc.

Material	Grade	Standard	Specification
STAINLESSS STEEL	304, 304L, 304H, 316, 316L, 316H, 316Ti, 321, 321H, 347, 347H, 309S, 310S, 310H, 317, 317L, 403, 410, 430 Super Stainless Steel: N08825, N08904, N08028, N08800 Duplex Tubes&Pipes: S31803, S32205, S31500, S32750	ASTM A213, ASTM A312, ASTM A269, ASTM A789, ASTM A790, ASTM B163, ASTM B423, ASTM B407, ASTM B668, EN10216, JIS G3463, GB/T14976	OD: 6-830mm Wall: 0.5-45mm
LOW ALLOY & ALLOY STEEL	T/P11, T/P12, T/P22, T/P23,T/P9, T/P91, T/P92, A333Gr6, A209-T1, 16Mo3,12Cr1MoV,13CrMo4-5, 10CrMo9-10, X20CrMoV121, SA355J2H, E355, Q345B, Q345D, 15MoG, 20MoG, 12Cr2MoG,15CrMoG,12Cr1Mo, 12Cr1MoVG,10Cr9Mo1VNb	ASTM A213, ASTM A333, ASTM A335, ASTM A209 DIN 17175, EN10216 GB8162,GB8163, GB5310	OD: 19-1067mm Wall: 2-150mm
CARBON STEEL	A53A/B, A106A/B/C, A210-A1, A210C, A179, A192, P195GH, P235GH, P265GH, ST37, ST44, ST52, 10, 20, 20G, 20MnG, 25MnG, 16Mn, Q235B, Q235D	ASTM A53, ASTM A106, ASTM A210, ASTM A179, ASTM A192, DIN17175, EN10216, DIN1629 GB3087, GB8162, GB8163	OD: 19-1067mm Wall: 2-150mm

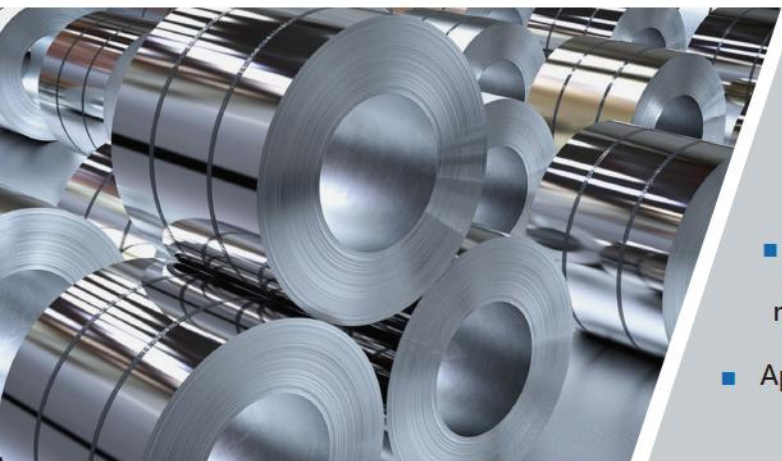
STEEL SHEET



- **Widely Supply:** Cold rolled and hot rolled steel sheets includes variety grades and size products to satisfy different customer demands.
- **Application:** Widely used in petrochemical, boiler, power, automobile, construction, energy engineering, machinery, and marine industries, etc.
- **Application Standard:** ASME, ASTM, SAE, EN/DIN, GB, JIS, etc.

Material	Grade	Standard	Specification
STAINLESSS STEEL	201, 304, 304L, 304H, 316, 316L, 316H, 316Ti, 321, 321H, 347,347H, 309S, 310S,310H, 317, 317L. 409, 410, 430 , N08904,N08367 Duplex Steel: S31803, S32205, S31500, S32750	ASTM A240, EN10088, GB3280, GB4237, GB24511	Thickness: 0.3-60mm Width: 1000/ 1219/ 1250/ 1500/ 2000mm (Customized)
LOW ALLOY & ALLOY STEEL	A204Gr.A/B, A285Gr.A/B/C, A299Gr.A/B, A387Gr.11/22/91,A516Gr55/60/65/70, A612, A738A/B/C S355J0, S355K2, S355J2, S355JR, P355GH, 16Mo3,10CrMo9-10, 12CrMo9-10, 12CrMoV12-10, 13CrMo4-5, X12CrMo5, Q355(Q345)A/B/C/D, Q345R ,Q370R, 12Cr1MoVR, 13MnNiMoR, 14Cr1MoR, 15CrMoR,16MnDR, 15MnNiDR, 09MnNiDR,30CrMo, 42CrMo, 50CrMo	ASTM A204, ASTM A285, ASTM A299, ASTM A387, ASTM A516, ASTM A612, ASTM A738, EN10025-2, EN10025-3, EN10025-4, GB3274, GB713, GB711, GB3531, GB3077	Thickness: 6-200mm Width: 1500-2200mm (Customized)
CARBON STEEL	A36, A283Gr.C, SAE1002, SAE1006, SAE1008, SAE1010, S235J0, S235J2, S235JR, S275J0, S275J2, S275JR, ST37-2, ST52-3, DC01, DC03, DC05, P195GH, P235GH, P265GH, P295GH, 10, 20, 45, Q195, Q235A/B/C/D, Q245R	ASTM A36, ASTM A283, SAE J403, EN10025-3, EN10025-4, EN 10130, EN10028-2, DIN1623, GB713, GB11253, GB5213, GB3274	Thickness: 0.25-150mm Width: 1250-2000mm (Customized)

STEEL COIL



- **Widely Supply:** Cold rolled and hot rolled steel coil products and strip product, includes stainless steel, alloy steel, carbon steel and silicon steel products. Product size can be customized according to customers demands.
- **Application:** Widely used in petrochemical, boiler, power, automobile, construction, energy engineering, machinery, marine, and motor products industries, etc.
- **Application Standard:** ASME, ASTM, SAE, EN/DIN, GB, JIS, etc.

Material	Grade	Standard	Specification
STAINLESS STEEL	201, 304, 304L, 304H, 316, 316L, 316H, 316Ti, 321, 321H, 347,347H, 309S, 310S, 310H, 317, 317L 409, 410, 430, N08904, N08367 Duplex Steel: S31803, S32205, S31500, S32750	ASTM A240, EN10088, GB3280,GB4237,GB24511	Thickness: 0.2-16mm Width: 1000/1219/1250/1500mm (Customized)
LOW ALLOY & ALLOY STEEL	A204Gr.A/B, S355J0, S355K2, S355J2, S355JR, 16Mo3, Q345R, Q370R, Q355(Q345)A/B/C/D, 12Cr1MoVR, 13MnNiMoR, 14Cr1MoR, 15CrMoR, 16MnDR, 15MnNiDR, 09MnNiDR, 30CrMo, 42CrMo, 50CrMo	ASTM A204, EN10025-2, EN10025-3, EN10025-4, GB3274, GB713, GB3531EN GB3077	Thickness: 0.8-16mm, Width: 1000mm-2130mm (Customized)
CARBON STEEL	A36, SAE1002, SAE1006, SAE1008, SAE1010, S235J0, S235J2, S235JR, S275J0, S275J2, S275JR, ST37-2, ST52-3, DC01, DC03, DC05, ST12, ST13, ST14, ST15, 10, 20, 45, Q195, Q235A/B/C/D	ASTM-A36, SAE J403, EN10142, EN10147, EN10292, EN10130, EN10028-2, DIN1623, GB713, GB711, GB11253, GB5213, GB3274	Thickness: 0.2-16mm, Width: 1000mm-2000mm (Customized)
SILICIUM STEEL	Non-oriented Electrical Steel: 35W230, 35W440, 50W250, 50W270, 50W350, 50W400, 50W600, 50W800, 65W470, 65W800, 20WTG1500 Grain Oriented Electrical Steel: 23Q110, 35Q135, 35Q145, 35Q155, 18QG085, 20QG085, 23QG120, 30QG100, 23QH080, 27QH100, 30QH110	GB2521.1, GB2521.2 Factory Standard	Non-oriented Electrical Steel: Thickness: 0.2-0.65mm, Width: 1000mm-1250mm Grain Oriented Electrical Steel: Thickness: 0.18-0.35mm, Width: 850mm-1200mm

STEEL ROUND BAR



- **Widely Supply:** Hot rolled, forged, and cold drawn bar products includes round bar, square bar, rectangle bar, and hexagonal bar Products. Products size can be customized according to customers demands.
- **Application:** Widely used in petrochemical , boiler , power, automobile, construction, energy engineering ,machinery, marine, and fasteners products industries, etc.
- **Application Standard:** ASME, ASTM, SAE, EN/DIN, GB, JIS, etc.

Material	Grade	Standard	Specification
STAINLESS STEEL	201, 304, 304L, 304H, 316, 316L, 316H, 316Ti, 321, 321H, 347,347H, 309S, 310S,310H, 317, 317L, 409, 410, 430 , N08904, N08367 Duplex Steel: S31803, S32205, S31500, S32750	ASTM A182, ASTM A276, ASTM A476, ASTM A479, EN10060, GB1220	Round bar diameter: 5-400mm Square bar : 10*10-180*180mm (Customized)
LOW ALLOY & ALLOY STEEL	A182-F11, A182-F22, A182-F91, 1215, SAE4140, SAE4145, A193-B16, 11SMn3, 34Cr4, 41Cr4, 42CrMo4, 50CrMo4, 21CrMo5-7, S355J2, 26NiCrMo14-6, X22CrMoV12-1, Q355B, Q355D,Q390, Q460, 15CrMo,42CrMo, 35MnB, Super Alloy: Inconel 600/ 625/ 718/ 750/ 800/ 825 Hastelloy B-2/ C22/ C276 Monel 400/ K500	ASTM A182, ASTM B425, ASTM A29, ASTM A193, EN10269, EN10083, EN10060, GB8731, GB702	Round bar Diameter: 5-1000mm Square bar: 50*50-280*280mm (Customized)
CARBON STEEL	SAE1045, SAE1055, ASTM A266-1, ST52, S235, C35E, C45E, S235J0, S235J2, S235JR, S275J0, S275J2, S275JR, 10#, 20#, 45#, Q195B, Q235B, Q235D, 20-65Mn	ASTM A266, ASTM A29, EN10083, EN10060, GB702, GB699, GB3078	Round bar Diameter: 5-1000mm Square bar: 50*50-280*280mm (Customized)

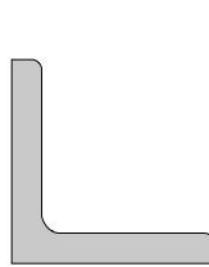
STEEL PROFILE

Applicable Standards: DIN, EN, ASTM, JIS, GB

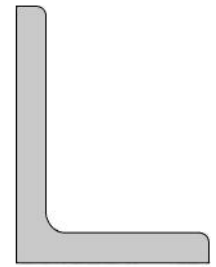
Material Grade: S235JR, S235J2, S275JR, S275J2, S355JR, S355J2, A36, SS400, Q235B, Q235D, Q355B, Q355D

LEG ANGLE

Equal Leg Angle	Size Range: Min 20*20*3mm, Weight/m:0.88kg Max 250*250*35mm, Weight/m:128kg
Unequal Leg Angle	Size Range: Min 30*20*3mm, Weight/m:1.12kg Max 200*150*15mm, Weight/m: 29.6kg



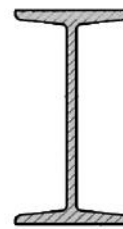
Equal Leg Angle



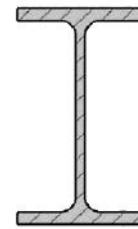
Unequal Leg Angle

I Profile

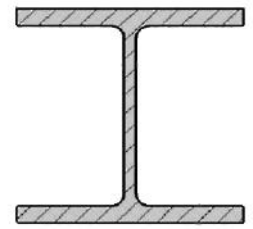
IPN	Size Range: IPN80-IPN600, Weight/m: 5.94kg-199kg
IPE	Size Range: IPE80-IPE600, Weight/m: 6kg-122kg
IPB	Size Range: IPB100-IPB1000, Weight/m: 20.4kg-314kg



IPN



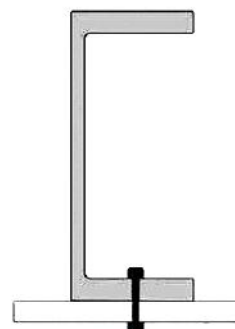
IPE



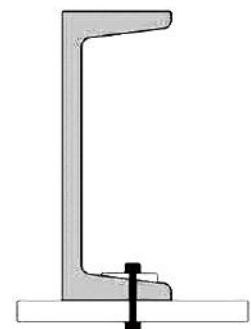
IPB

U Profile

UPE	Size Range: UPE80-UPE400, Weight/m: 7.9kg-72.2kg
UPN	Size Range: UPN50-UPN400, Weight/m: 5.59kg-71.8kg



UPE



UPN

FITTING & FLANGE

- ✔ **Applicable Standards:** ASME, ANSI, MSS, JIS, DIN, EN, BS, AWWA, GB, SH, HG
- ✔ **Size Range:** 1/2" — 100" ; DN 15 — DN 2500
- ✔ **Thickness & Pressure Rate:** 2mm — 70mm; 150LB — 2500LB
- ✔ **Material Grade:** Carbon Steel, Low Temperature Carbon, Stainless Steel, Duplex Stainless Steel, Nickel-Based Alloy, Composite Material (CLADING)

REGULAR PIPE FITTING

Material Grade	Carbon steel, low temperature carbon, stainless steel, duplex stainless steel, nickel-based alloy, composite material (CLADING)
Size Range	DN 15-DN 2500
Scope of Supply	<ul style="list-style-type: none"> ⊙ Elbow (long /short radius, 45°, 90°, 180°) ⊙ Tee (straight/reducing) size range: 1/2" to 96" ⊙ Reducer (concentric, eccentric) ⊙ Caps and stub ends



SPECIAL PIPE FITTINGS

Y-Tee, 2.5D/5D Bends, Miter Elbow, Cross

FLANGE TYPE

Material Grade	Low Temperature Carbon, Stainless Steel, Duplex Stainless Steel, Nickel-Based Alloy, Composite Material (CLADING)
Size Range	DN 15-DN 1600
Scope of Supply	<ul style="list-style-type: none"> ⊙ Welding Neck Flange ⊙ Slip on Flange ⊙ Blind Flange ⊙ Socket Weld Flange ⊙ Lap Joint Flange ⊙ Threaded Flange ⊙ Orifice Flange ⊙ Figure-8 Blank ⊙ Paddle Blank ⊙ Paddle Spacer



ALUMINUM PRODUCTS

- ✔ **Material Grade:** 1050, 1060, 2A 14, 3003, 3103, 4032, 5454, 5754, 5082, 5086, 6061, 6060, 6082, 7075, 7475
- ✔ **Application Standard:** ASME, ASTM, EN/DIN, GB, JIS, etc.
- ✔ **Application:** The products are widely used in aerospace, aviation, transportation, ornament, printing, packaging, building, and electronics, etc.

ALUMINUM COIL



ALUMINUM TUBE



ALUMINUM SHEET



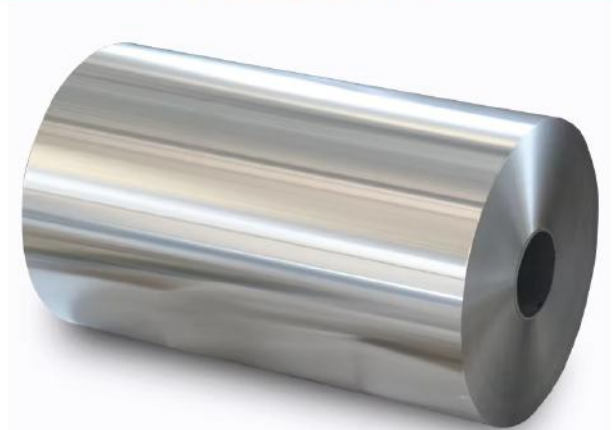
ALUMINUM BAR



ALUMINUM STRIP



ALUMINUM FOIL



COPPER PRODUCTS

- ✔ **Material Grade:** C11000, C10200, CU-ETP, T2, T2导, TU1, TU2, TAG0.1, CuAg0.1, C10400, H62, H65, H68
- ✔ **Application Standard:** ASME, ASTM, EN/DIN, GB, JIS, etc.
- ✔ **Application:** Widely used in hydropower, power transformer, semiconductor integrated circuits, metallurgy, aerospace, chemical industry, also used for stamping, etching processes.

COPPER COIL



COPPER TUBE



COPPER SHEET



COPPER BAR



COPPER STRIP



COPPER FOIL



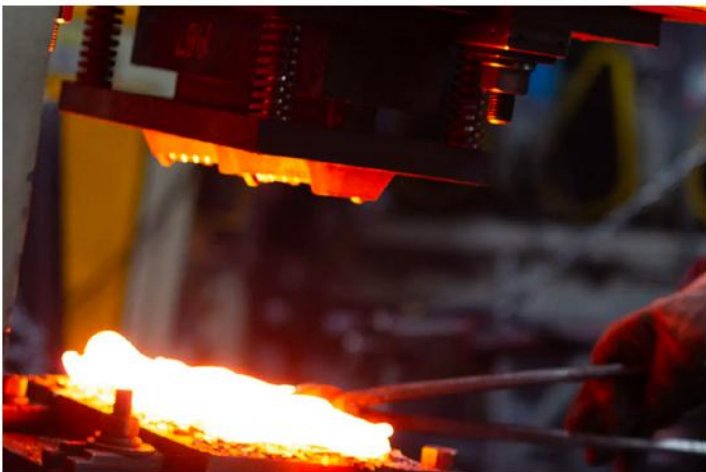
CUSTOMIZATION METAL PRODUCTS

- 🏭 **Production Technology:** Cold Dawn, Forge, Cast
- 🏭 **Application:** Oil&Gas, Power generation, Aerospace, Mechanical equipment, etc.

CASTING



FORGING



ELECTRONIC COMPONENTS

Components we can provide:

- | | | | |
|--------------------------|--------------------------------|-----------------------------|----------------|
| ✓ Resistor | ✓ Capacitor | ✓ Inductor | ✓ Diode |
| ✓ Transistor | ✓ Switch | ✓ Relay | ✓ Power Supply |
| ✓ Motor | ✓ Sensor | ✓ Transformer | ✓ Fuse |
| ✓ Connector | ✓ Oscillator | ✓ Amplifier | ✓ Filter |
| ✓ IC- Integrated Circuit | ✓ FET- Field Effect Transistor | ✓ LED- Light Emitting Diode | |



NEW ENERGY

Photovoltaic Solar Panels

Application	Commercial/ Industrial/ Home
Solar Panel Type	Monocrystalline Silicon, Polycrystalline Silicon
Battery Type	LFP (LiFePO4) / NCM (Ni, Co, Mn) / Li-Po
Controller Type	MPPT, PWM
Energy Storage Type	Hybrid Solar System, On-Grid Solar System, Off-Grid Solar System
Mounting Type	Ground Mounting/ Roof Mounting
Certificate	TUV/ ISO/ INMETRO



Energy Storage System / Batteries

Application	Household Energy Storage, New Energy Vehicles, Commercial Energy Storage, Communication Industry Energy Storage, New Energy Power Plant Energy Storage
Battery Type	LFP (LiFePO4) / NCM (Ni, Co, Mn) / Li-Po
Category	Battery Module, Pack, Rack, Cooling System, Containerized Energy Storage
Capacity	50Ah / 280Ah / 314Ah / 1130Ah / Customizable



Solar Hybrid Inverter

Type	DC/AC Inverters
Inverter Efficiency	93%
Input Voltage	120V~1000V
Output Voltage	230VAC ± 5% @ 50/60Hz
Output Current	25A
Output Frequency	50Hz/ 60Hz Auto
Size	485/330/135mm
Certificate	CE(IEC/EN62109-1,-2),ROHS2.0
Battery Voltage	48 VDC



Integrated DC Charger

Application Scenarios	House/ Apartment, Office/ Commercial Area/ Transportation Hub Parking Lot
Output Voltage	40/ 80/ 120/ 160/ 240/ 320 KW
Frequency	50-60 Hz



WATER FILTER

Specifications				
Main Products	Self Cleaning Filter Drum Filter	Pipe-Line Filter Valve	Sand Filter	Disc Filter
Body	Epoxy-coated carbon steel St 37-2/ Stainless Steel			
Filter	Stainless steel			
Filter Support	P.V.C/ Stainless steel			
Assembly Sewage Collection	304 stainless steel, Brass, P.V.C			
Differential DP Controller	Brass, P.V.C			
Hydraulic Motor	Stainless steel 304			
Liquid Piston	Stainless steel 304, Brass, Rubber EPDM			
Drain valve	Stainless steel, brass, Rubber EPDM			
Seals	Rubber EPDM			



Applications: Different filters are widely used in Agricultural Irrigation, Municipal Project, Power Industry, Steel Factory, Paper Making, Coal, Metallurgy and other industries.

Customized Filters: We can also manufacture filters according to user's requirements specifications, encompassing diverse size dimensions, material preferences such as carbon steel and stainless steel, color preferences, and any other unique requirements they may have.



ZYT CO., LTD.

9th Floor, Building 17,
Shixing Street #30, Shijingshan
Beijing, China

Tel: +86-13716952218
Email: zyttech@zytgroups.com
Website: www.zytgroups.com

